



# ***Plainview-Old Bethpage CSD 2023-2024 Elementary School Budgets***

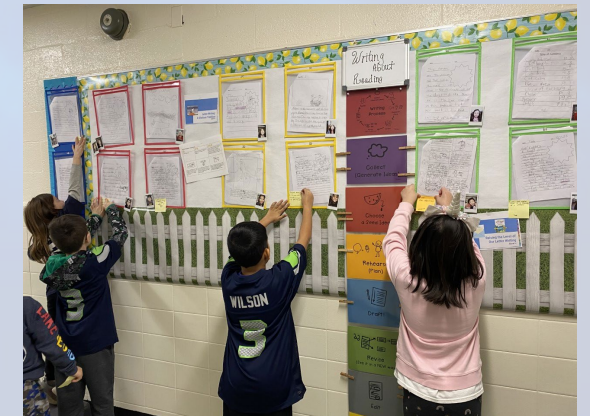
March 27, 2023



# *Elementary School Goals*



- Continued support of rigorous literacy and mathematics instruction
- Address ongoing social emotional development of young learners
- Analyze and design additional resources in Play Spaces
- Increased opportunities for K-4 students to become involved in the POB community







## ***Points of Pride 2022-2023***

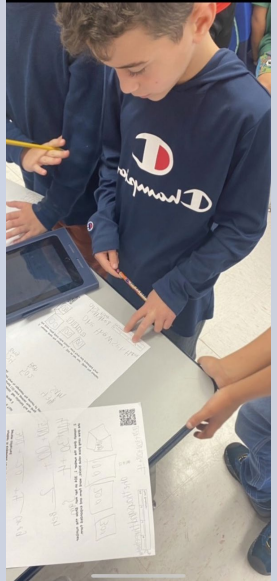
- Kindergarten Play Space
- PTA Arts in Education collaboration
- In-person celebrations, concerts, ceremonies, guest readers, etc.
- Third and Fourth Grade clubs
- Student leadership initiatives
- Data digs with Math Coach and Math Chairperson
- Progress monitoring meetings with ELA Chairperson
- Community service experiences





## ***Planned Initiatives 2023-2024***

- Increase the selection in classroom libraries including adding decodable texts K-2
- Support literacy instruction by implementing new reading units in K-2 and utilizing Teachers College staff developers to continue to build instructional capacity
- Update Math curriculum K-4 – Go Math Connected
- Continue Third and Fourth grade club opportunities
- Create spaces to promote social emotional learning
- Include students in building decision making with stakeholder groups





## ***Budget Drivers 2023-2024***

<b>Budget Code</b>	<b>Budget Description</b>	<b>2022 - 2023 Budget</b>	<b>2023 - 2024 Proposed Budget</b>	<b>Dollar Difference</b>	<b>% Difference</b>
A-2110-481-13-00-00	OB Textbooks	\$34,228	\$56,746	\$22,518	65.00%
A-2110-481-19-00-00	JJP Textbooks	\$58,392	\$69,590	\$11,198	19.18%
A-2110-481-18-00-00	PAS Textbooks	\$39,437	\$50,293	\$10,856	27.53%
A-2110-491-31-00-00	SR Textbooks	\$59,270	\$91,810	\$32,540	54.90%

# ***Elementary School Historical Perspective 2023-2024***

## ***Old Bethpage***

2022-2023: \$83,395

2023-2024: \$99,384

Year-to-Year Change:  
\$15,989 or 19.17%

## ***Stratford Road***

2022-2023: \$148,557

2023-2024: \$188,522

Year-to-Year Change:  
\$39,965, or 26.90%

## ***Judy Jacobs Parkway***

2022-2023: \$115,782

2023-2024: \$121,908

Year-to-Year Change:  
\$6,126 or 5.29%

## ***Pasadena***

2022-2023: \$104,089

2023-2024: \$94,201

Year-to-Year Change:  
-\$9,888 or -9.5%

# *Vote!*

## *When and Where?*

*Tuesday, May 16, 2023*

*6am-9pm*

- ✓ *Jamaica Avenue School*
- ✓ *Mattlin Middle School-Administration Offices*

[www.pobschools.org](http://www.pobschools.org) *for more information*

# *A Smart Investment Thank You!*

